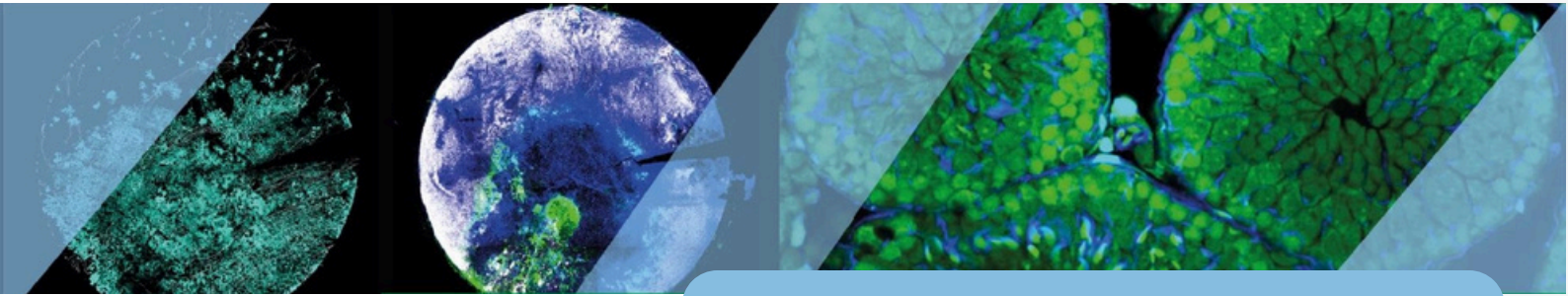


7^{ème} Journée Louise Harel



Friday, march 14, 2025

Institut Curie Amphithéâtre BURG - 12 rue Lhomond - Paris 5e

Cancer biomechanics

“EXPLORING THE PHYSICAL FORCES DRIVING TUMOR PROGRESSION”



Valerie WEAVER
UCSF, USA - Keynote Speaker



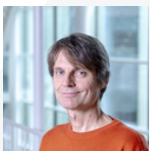
Xavier TREPAT
IBEC, Spain



Sara WICKSTROM
MPI-Munster, Germany



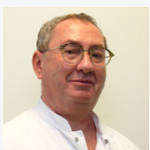
Morgan DELARUE
LAAS, France



Peter FRIEDL
Radboud UMC, Netherlands



Julie GUILLERMET
CRCT, France



Gilles DOLIVET
ICL, France



Erik SAHAI
Francis Crick Institute, UK



Registration & information

www.sfc.asso.fr