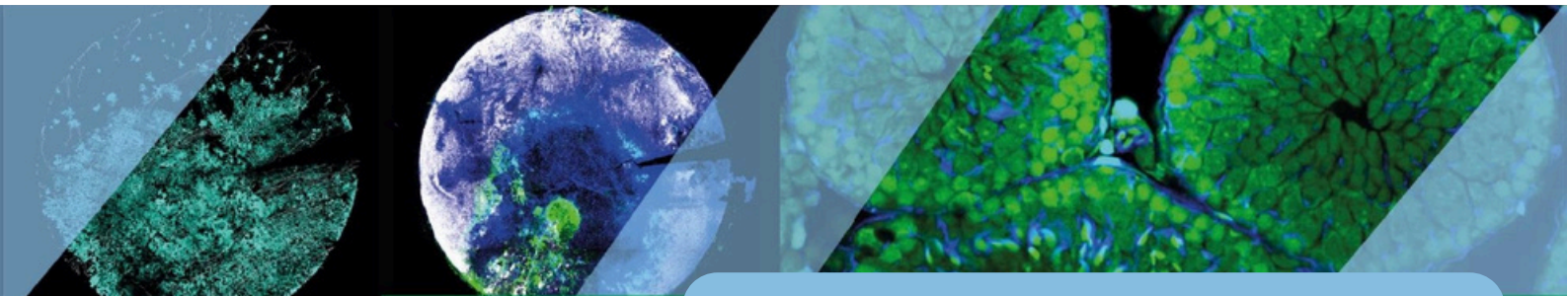


# 8<sup>ème</sup> Journée Louise Harel



Vendredi 27 mars 2026

Institut Curie Amphithéâtre BURG - 12, rue Lhomond Paris 5e

12.40 – 13.00 **Rising Star awards**



## Louise Harel Prize

### SUMMARY OF RESEARCH PROJECT AND RESULTS

In 2026 for the first time, the French Cancer Society (SFC) will sponsor a prize, the **Louise Harel Prize**, devoted to support an original research project led by a young scientist (PhD student or postdoc). The Prize (**2 000 €**) will be remitted during the **Louise Harel day on 27<sup>st</sup>, March 2026** and the awardee will be invited for a short (15 min) scientific talk during this day.

Applicants should send a summary of their research project (one page including the text, Times new Roman 12, line spacing 1.5, plus an unique Figure with figure legend), related to the Louise Harel day topic "**Tumor Initiation: Cancer Cell Fate, Early Detection & Interception of Cancer**", along with a short CV and full publication list.

**Applications must be sent by mail to [info@sfc.asso.fr](mailto:info@sfc.asso.fr) before the 15<sup>th</sup> of February 2026.**



*Inscription & information*

**[www.sfc.asso.fr](http://www.sfc.asso.fr)**